



## Smart T3 Modular Switchback Signal Pods - Rear

DNL.T3S.10300

### Thank you for choosing DENALI

We know you would rather be riding your bike than wrenching on it, so we go the extra mile to make sure our instructions are clear and as easy to understand as possible. If you have any questions, comments, or suggestions don't hesitate to give our gear experts a call at 401.360.2550 or visit WWW.DENALIELECTRONICS.COM

### Please Read Before Installing

DENALI products should always be installed by a qualified motorcycle technician. If you are unsure of your ability to properly install a product, please have the product installed by your local motorcycle dealer. DENALI takes no responsibility for damages caused by improper installation. **Caution:** When installing electronics it is extremely important to pay close attention to how wires are routed, especially when mounting products to the front fender, front forks, or fairing of your motorcycle. Always be sure to turn the handlebars fully left, fully right, and fully compress the suspension to ensure the wires will not bind and have enough slack for your motorcycle to operate properly.

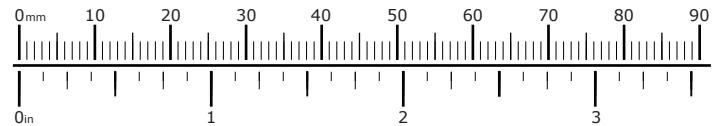
### Installation Tips

We strongly recommend using medium strength liquid thread locker on all screws, nuts, and bolts. It is also important to ensure that all hardware is tightened to the proper torque specifications as listed in your owner's manual. For included accessory hardware please refer to the default torque specifications provided below. Inspect all hardware after the first 30 miles to ensure proper torque specifications are maintained.

Bolt Size	in-lbs	ft-lbs	Nm
M3	10.0 in-lbs	-	1.0 Nm
M4	23.0 in-lbs	-	2.5 Nm
M5	44.5 in-lbs	3.5 ft-lbs	5.0 Nm
M6	78.0 in-lbs	6.5 ft-lbs	9.0 Nm
M8	-	13.5 ft-lbs	18.0 Nm
M10	-	30.0 ft-lbs	41.0 Nm
M12	-	52.0 ft-lbs	71.0 Nm

### Hardware Sizing Guide

Not sure what size bolt you have? Use this ruler to measure screws, bolts, spacers, etc. Remember, the length of a screw or bolt is measured from the start of the "mounting surface" to the end of the screw, so only include the screw head when measuring countersunk screws.



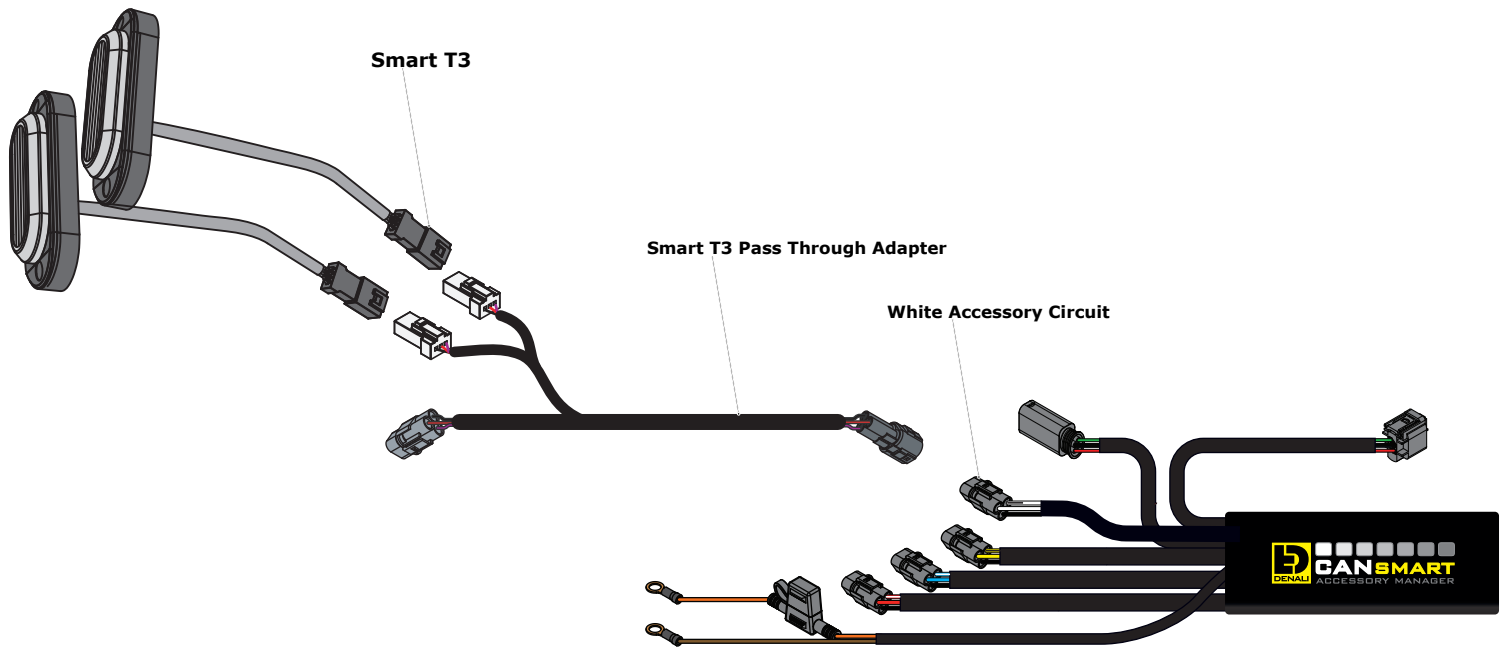
## What's In The Box?



### Kit Contents

- (a) Smart T3 Pod.....Qty 2
- (b) Wiring Passthrough Adapter.....Qty 1
- (c) Self Tapping Screw.....Qty 4

# 1. Connecting To CANSMART



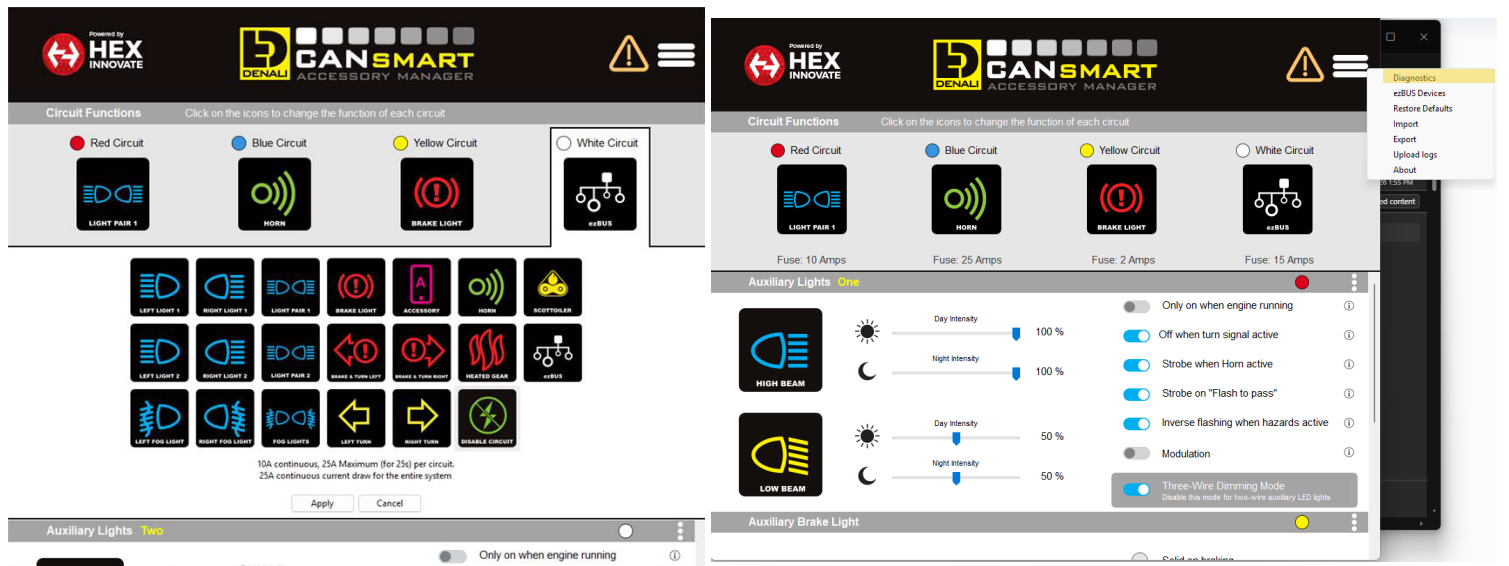
## 1.1 - Light Pod Wiring

**Step One:** Connect the Smart T3 Pods to the wiring pass-through adapter.

**Step Two:** Connect the Pass-Through adapter to the white circuit on the CANsmart controller.

**Note:** The open connector (black 3 Pin) may be used for additional Smart enabled/capable driving lamps.

# 2. CANsmart Programming

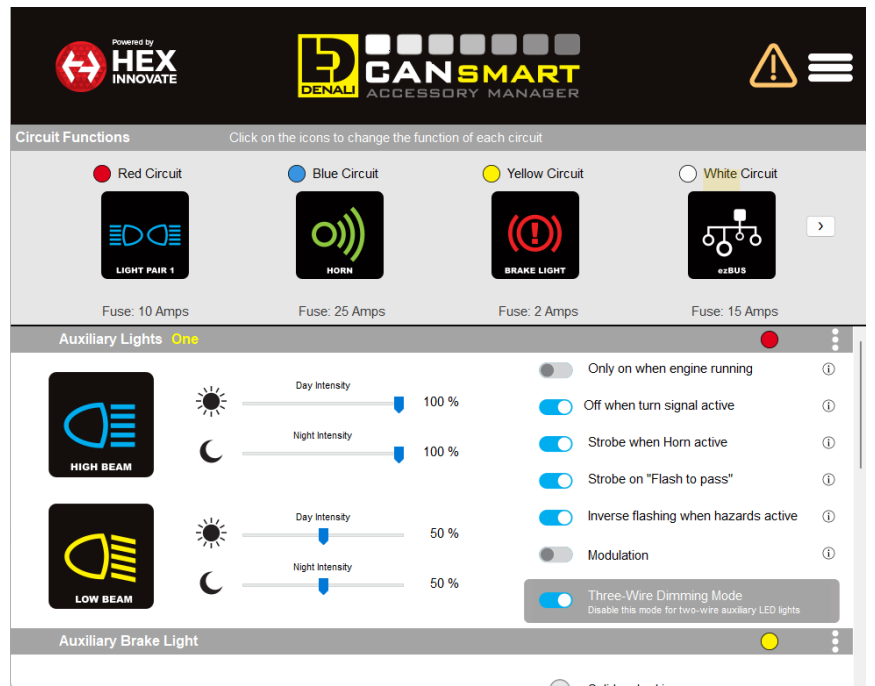
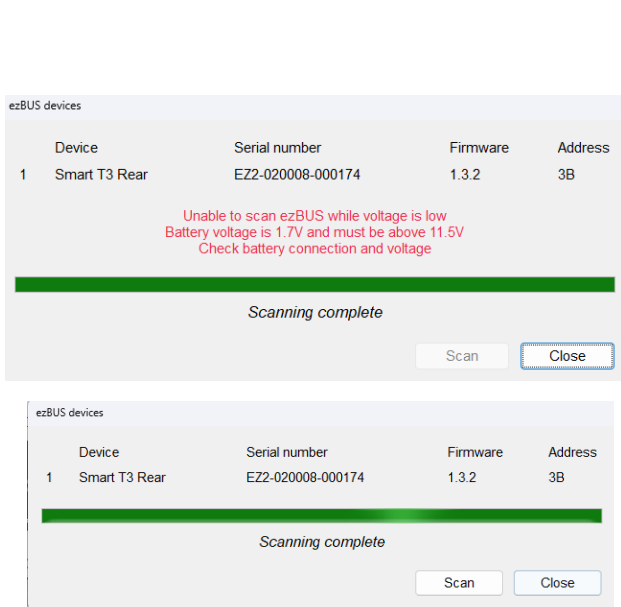


## 2.1 - Circuit Selection

**Step One:** Plug the CANsmart into a computer and select the white circuit.

**Step Two:** Click the drop down icon in the top right corner and select ezBUS Devices.

# 2. CANsmart Programing (continued)

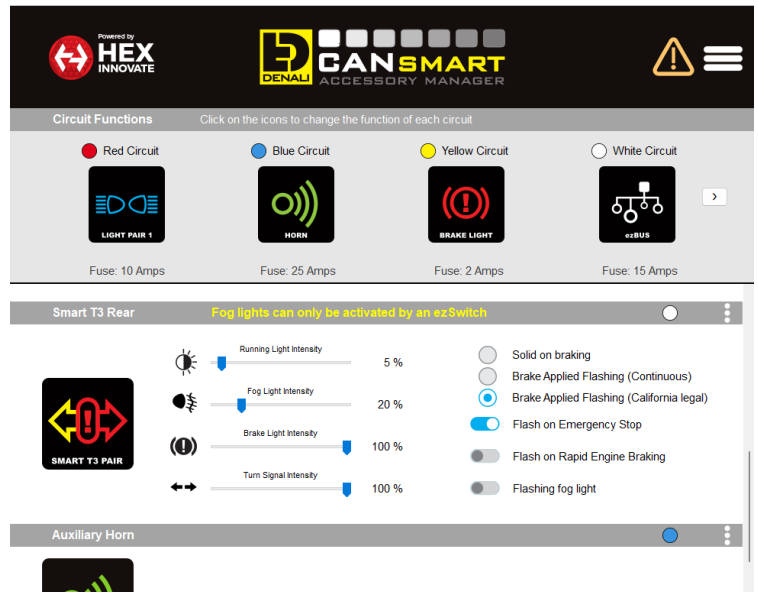
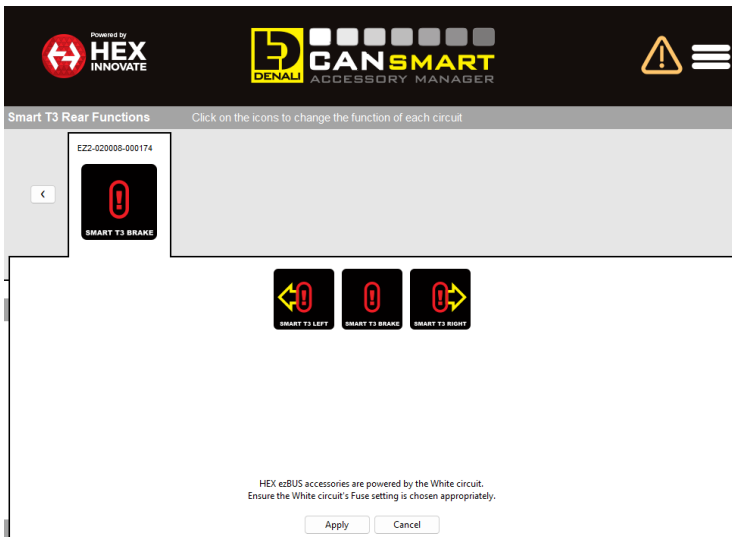


## 2.2 - Device Scanning

**Note:** If the warning message above appears, the ezBUS needs to be connected to power. Key the Vehicle on or connect to another 12V Source.

**Step One:** Once connected to power, press the Scan button.

**Step Two:** When scanning is complete, locate and press the white arrow button to the right of the white circuit (See highlighted area on the image to the right). This will open up an additional area in the software that controls Smart T3 features.



## 2.3 - Function Selection

**Note:** All ezBUS items will show here with separate tabs and programmable functions. Each Smart T3 pod will have its own tab with unique identification number on top.

**Step One:** Designate each Smart T3 Pod as either Left or Right Turn Signal.

**Step Two:** After designating sides, select the desired functions for each pod. See the image on the right as example.